

**Middle San Pedro River  
2021 Surface Water Extent**

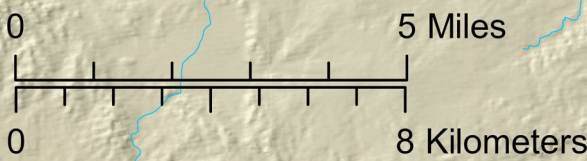
- Wet River
- Dry River
- Unserved stream or wash

SPRNCA to Soza Wash  
1.6 mi (2.6 km) of wet river  
Longest wet segment 1.0 mi (1.6 km)  
Surveyed length 37.4 mi (60.2 km)  
4% of surveyed length wet  
Data collected: June 14-20, 2021

Data collected by Community Watershed Alliance,  
Cascabel Volunteers, Pima County,  
and The Nature Conservancy.

Mapping by The Nature Conservancy.  
Funding provided by the Walton Family Foundation.

Reaches with no data shown were not surveyed.  
Stream lines are based on the USGS National  
Hydrography Dataset, and may not exactly  
match the current channel alignment.



**San Pedro Community Monitoring Network  
Surface Water Map, 2021**

